

AVED

AVED

2024 YACHT HOUSE

YACHTSIDE LUXURY LIVING

AVED-SA.COM



PROJECT PROFILE



YACHT HOUSE

YACHTSIDE LUXURY LIVING

PROJECT INTRODUCTION

Yacht House is among the latest projects by AVED Real Estate Development, embodying the company's creativity and expertise to present world-class, refined, and innovative residential areas.

The Yacht House project is designed to tell a story of luxury and comfort, distinguished by stunning sea views.

Its strategic location in the Marafy project and new marina master plan makes it part of an exceptional panorama.



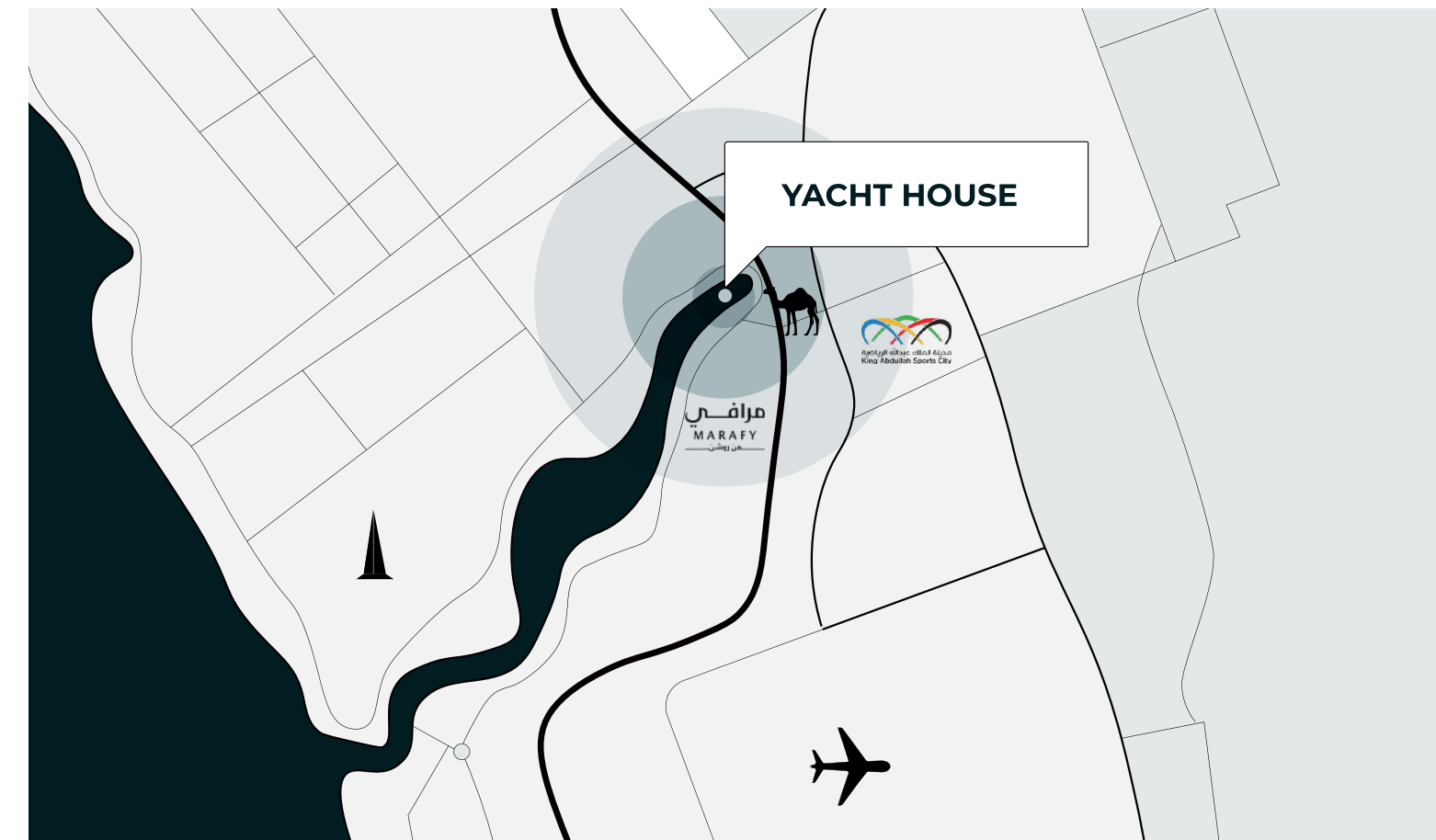
YACHT HOUSE

YACHTSIDE LUXURY LIVING

PROJECT
LOCATION



Yacht House stands out with its distinct location in South Obhur directly on the sea, facing the Camel Roundabout, and surrounded by the most popular areas.



Strategic Location



The Marafy project



Only 15 minutes away from the airport



Al-Waleed Tower project



King Abdullah Sports City



Camel Roundabout

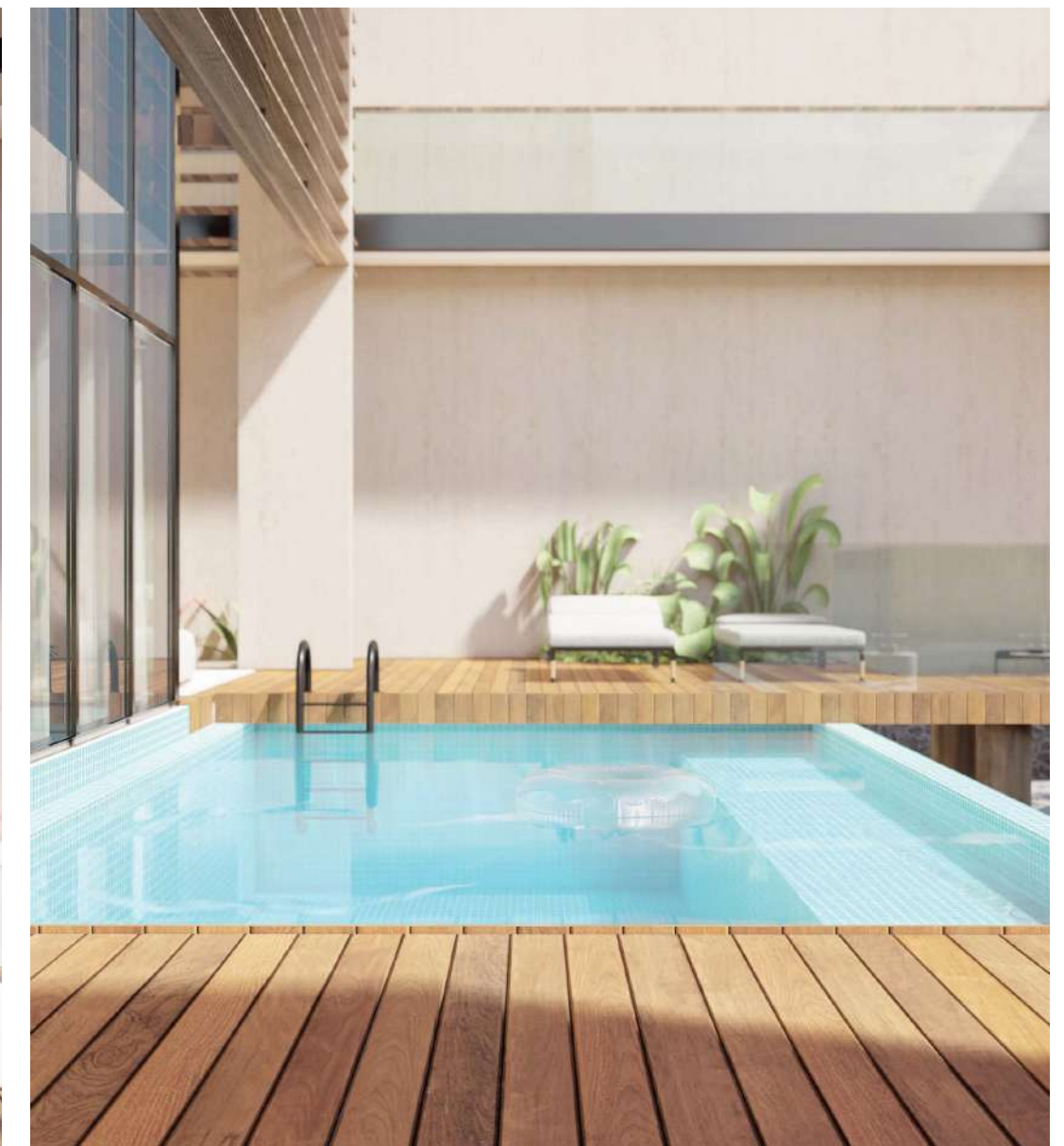
YACHT HOUSE

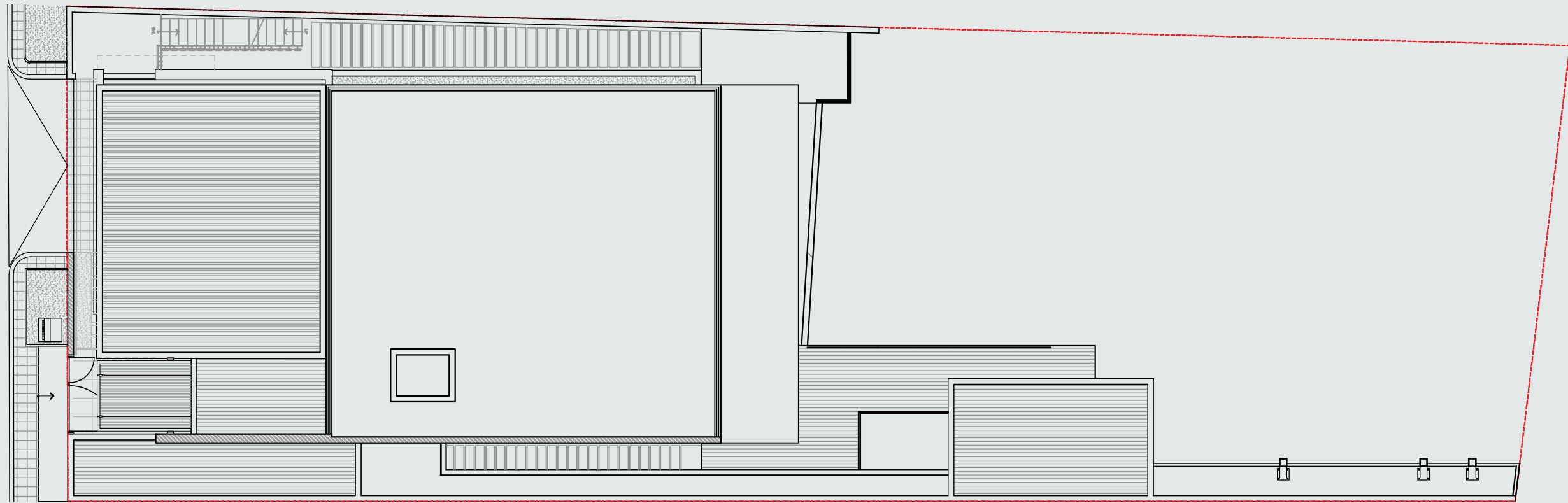
YACHTSIDE LUXURY LIVING

PROJECT
UNIT SIZES

Yacht House is on a land area of 1663 square meters, providing a range of options for you to choose the space that perfectly aligns with your preferences.

Each villa also comes with a private yacht berth of 24 meters.



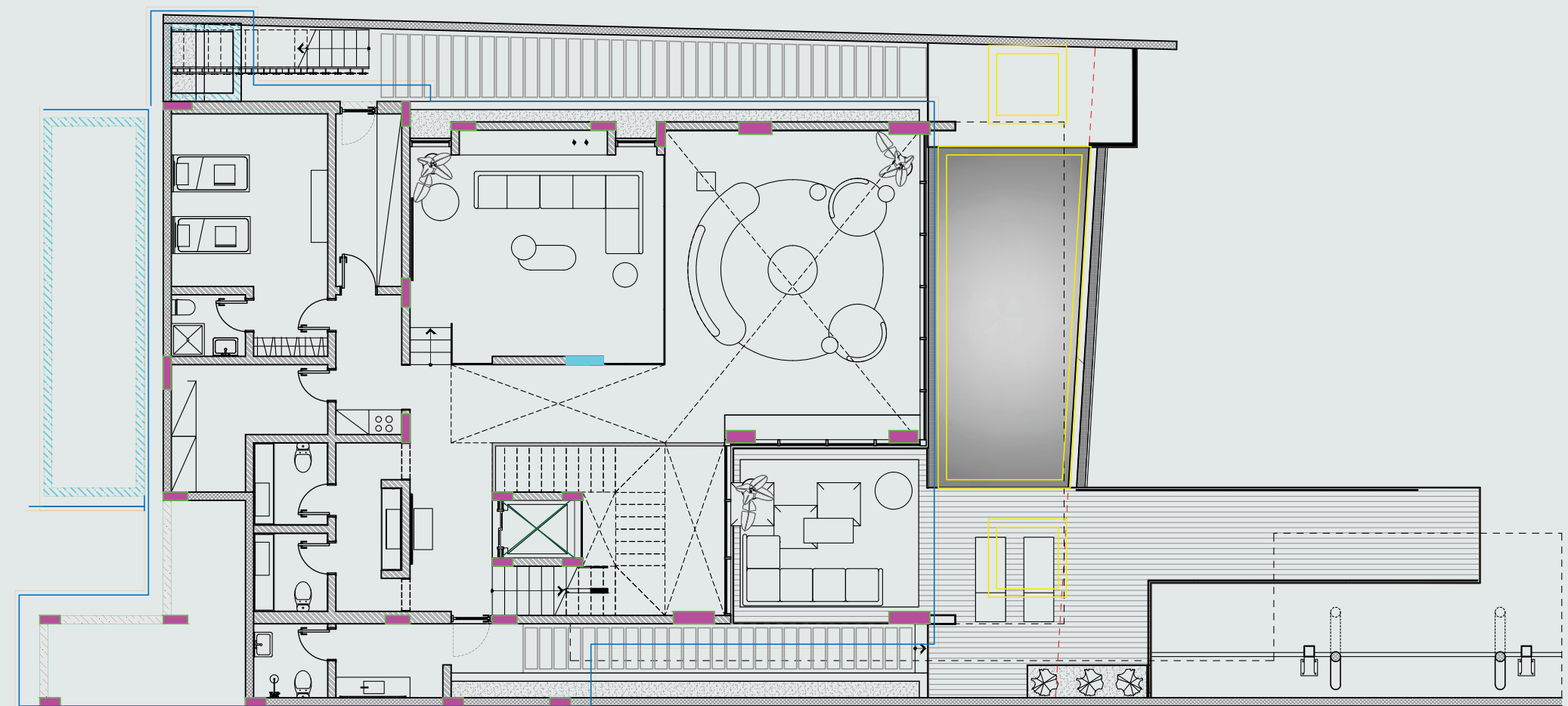


VILLA V1

With an area of 815 square meters, it is ideal for families seeking a comfortable and refined living space.

VILLA V2

With an area of 848 square meters, it is perfect for those seeking ample space and a luxurious living experience.



YACHT HOUSE

YACHTSIDE LUXURY LIVING

PROJECT
INFORMATION



The residential units are meticulously designed to meet the client's needs in terms of space, number of rooms, and other details that ensure a distinctive living experience.

Each unit comes fully finished to ensure a smooth transition and allow you to enjoy your new home hassle-free.

KEY FEATURES

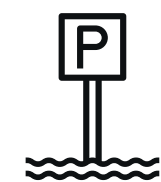
 4 private parking spaces: 2 indoor and 2 outdoor with electric cars charging stations

 VRF air conditioning system

 Main kitchen

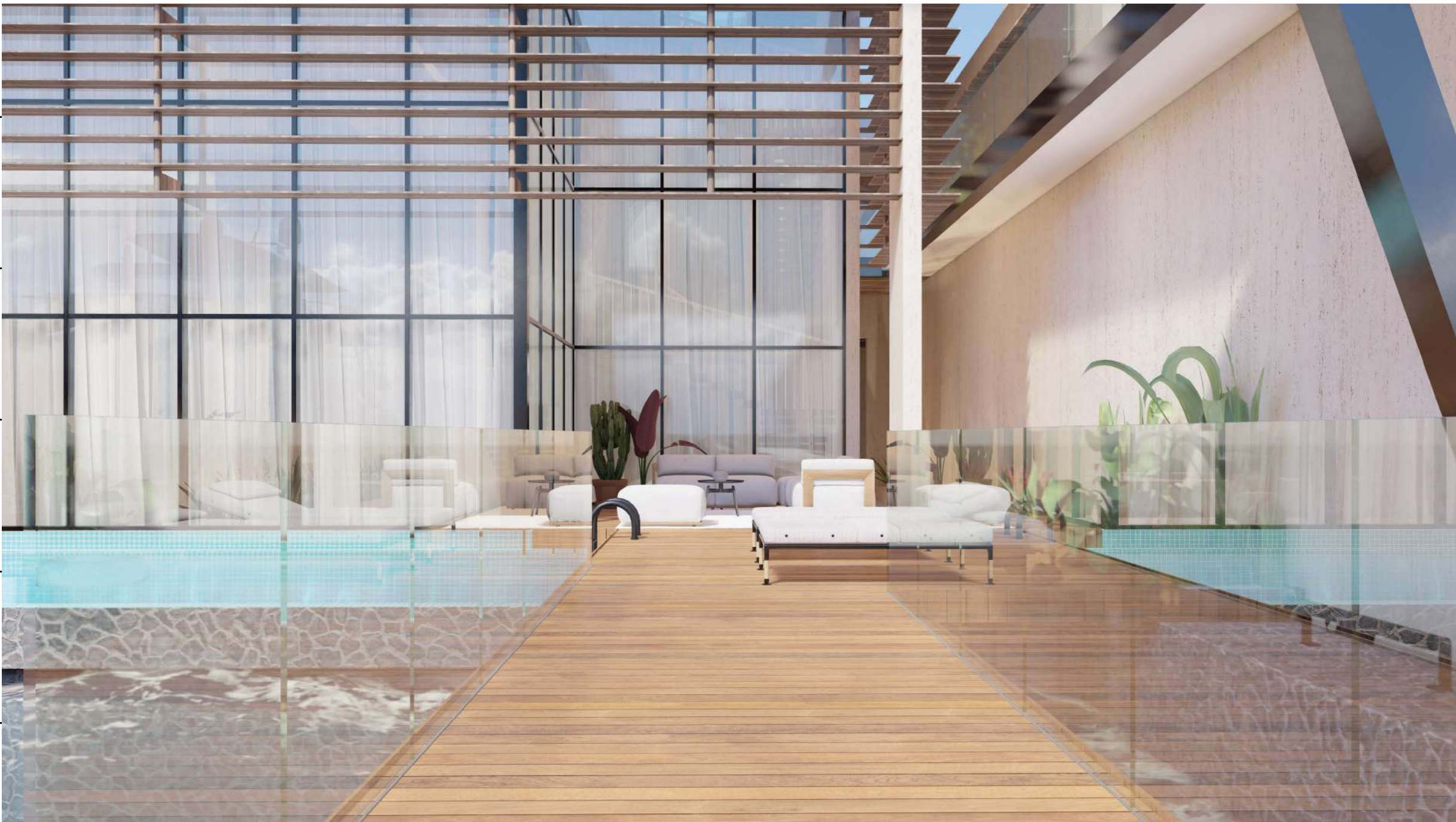
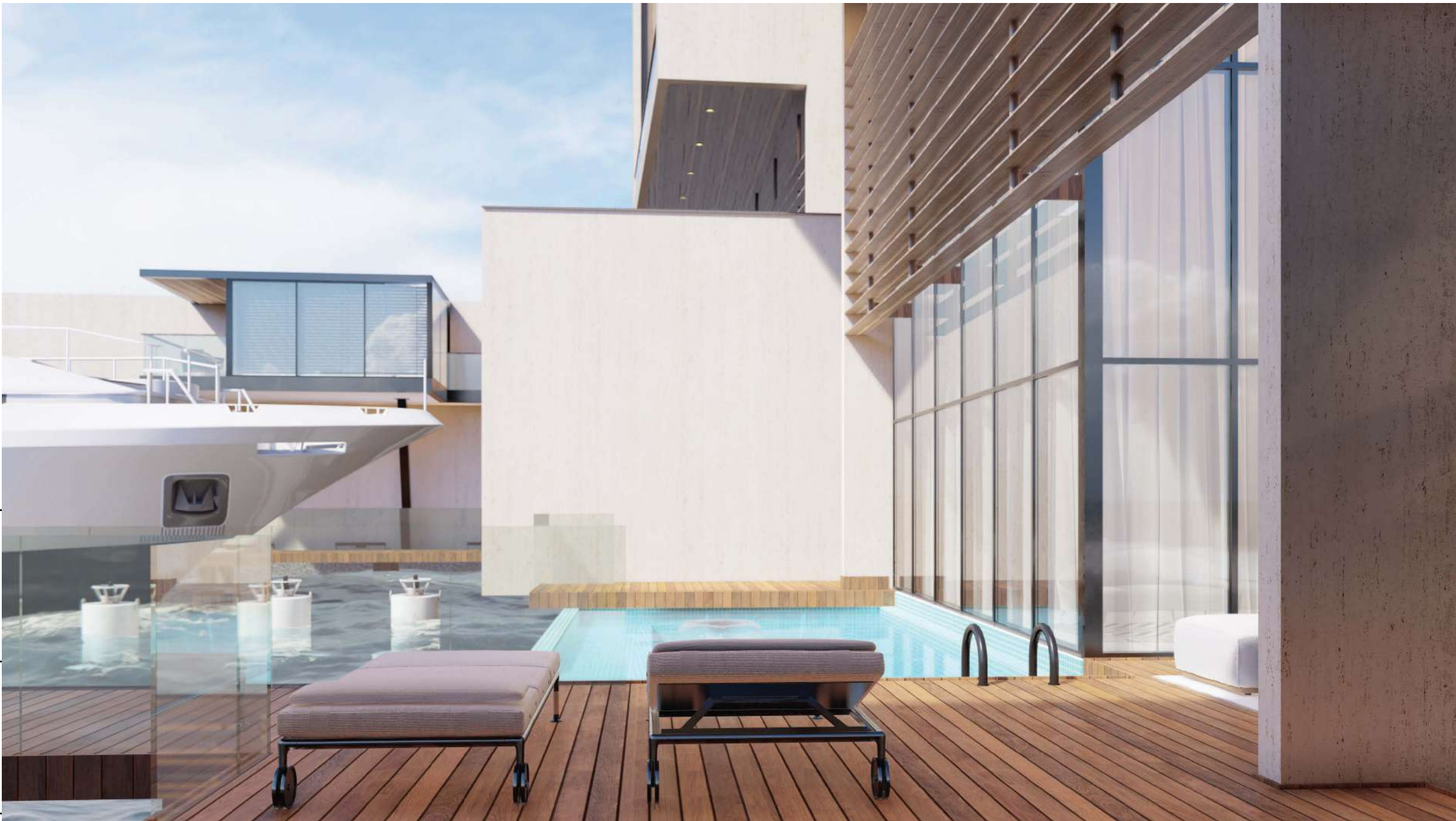
 Private pool

 Private elevator

 Private yacht berth

 Maid's room with private bathroom

 Driver room



YACHT HOUSE

YACHTSIDE LUXURY LIVING

GROUND FLOOR

95 SQM

Includes the entrance, reception, dining room, and main kitchen with service entrance.

Lobby: 13 SQM



Dining: 34.10 SQM



Bathroom: 5.40 SQM



YACHT HOUSE

YACHTSIDE LUXURY LIVING

FIRST FLOOR

270 SQM

Features 3 bedrooms, including a mini master bedroom overlooking the sea, office, and two children's rooms.

Office: 14.40 SQM



Bedroom 1: 18.80 SQM



Bathroom 1: 5 SQM



Bedroom 2: 18 SQM



Bathroom 2: 6 SQM



Master bedroom: 23.90 SQM



Master bathroom: 22.80 SQM



YACHT HOUSE

YACHTSIDE LUXURY LIVING

TOP FLOOR

110 SQM

Master bedroom overlooking the sea with dressing room and indoor/outdoor seating.

Master bedroom: 23.70 SQM



Master living room: 32.90 SQM



Master bathroom: 22.19 SQM



YACHT HOUSE

YACHTSIDE LUXURY LIVING

BASEMENT

225 SQM

Includes a large lounge with a dining room and bathrooms, outdoor seating with a sea-view pool, a private yacht berth, as well as a maid's room, laundry room, and storage room.

Lounge: 25.90 SQM



Salon: 34.90 SQM



Bathroom: 14.70 SQM

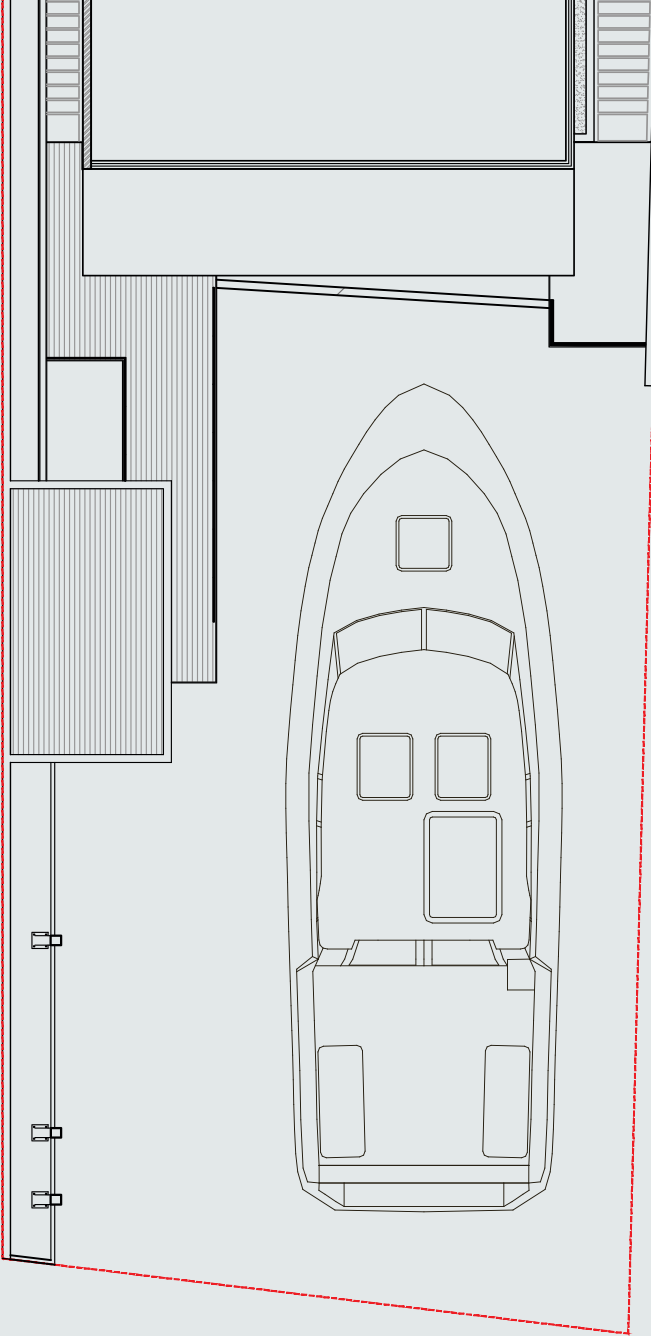


Living room: 32.70 SQM





YACHT HOUSE



Length 24M

Depth 9.5M

YACHTSIDE LUXURY LIVING

YACHT PARKING AREA

Length of yacht parking area: 24 meters
Yacht parking depth area: 9.5 meters

YACHT HOUSE

YACHTSIDE LUXURY LIVING

AVED

مصنع ألومنيوم الوكيل
AL WAKEEL
aluminum factory

KONE

KOHLER®

Leaders
Constructions
Company

YORK®
Heating and Air Conditioning

ESSA BINLADEN
— FOR DECORATION —

POOL
By T. Al-Hawaj

مكتب أحمد فؤاد باناجه للاستشارات الهندسية
Ahmed Fouad Banaja Consulting Firm

Join the Yacht House community and choose the unit
that best compliments your needs and lifestyle.

INFO@AVED-SA.COM

+966 56 658 9443